

Eastview High School

A comprehensive and college preparatory public high school.

2016-2017 School Profile

SUPERINTENDENT

Jane Berenz

PRINCIPAL

Dr. Randall W. Peterson

ASSISTANT PRINCIPAL FOR STUDENT SERVICES

Mr. Bruce Miller

COUNSELING

Department Leader for College Planning / GT & Assessment:

Ms. Chris Franken

Department Leader for Counseling & Student Services:

Ms. Larinda Hodges

Counseling Faculty

Mr. Quincy Davis
Ms. Kelly Fisher
Ms. Terri Greener
Ms. Larinda Hodges
Ms. Anne Scholen
Mr. Mark Wanous

Registrar

Ms. Cheryl Cross
cheryl.cross@district196.org
952.431.8913

Counseling Secretary (Transcripts, College Visits, Counselor Contacts)

Ms. Pat Gerrits
patricia.gerrits@district196.org
952.431.8914

Counseling Office: 952.431.8913

Fax: 952.431.8932

CEEB Code: 242123

DISTRICT 196 SCHOOL BOARD

Jackie Magnuson, Chairperson
Gary L. Huusko, Vice Chairperson
Joel Albright, Clerk
Bob Schutte, Treasurer
Art Coulson, Director
Sachin Isaacs, Director
Mike Roseen, Director

About Eastview

Eastview (est. 1997) is a comprehensive & college preparatory public high school located in Apple Valley, (suburban Minneapolis/St. Paul,) Minnesota with an enrollment of 2150 students in grades 9-12. Eastview has been distinguished as one of "America's Best High Schools" by Newsweek, US News and World Report and by the Washington Post.

Our Learning Structure

Creative and progressive structuring of the facility and the school day schedule provides the ultimate options to support focused and engaged learning. All 9th and 10th graders are provided a touchstone personal learning experience as members of interdisciplinary learning teams, providing a challenging college readiness academic experience, supported by a conscientious team of teachers and an individualized learning plan. Student/teacher phasing, platooning and teaming are facilitated through quarter, trimester, semester and full-year courses, taught in both single period and block scheduling. Within the traditional foundation, time and space is leveraged to best address the needs of students, grade levels, ability and curriculum. The foundation of courses is 50 minutes in length, five days per week, four terms of 9 weeks for a total of 36 weeks per school year.

Our Learning Facility

Our state-of-the-art digital classroom design includes built-in LCD's and SMART Technology; an infrastructure that includes building-wide wireless network/internet connections; a 4:1 student to desktop computer ratio; student mobile computing labs; 1:1 iPad learning environment; a two-level Learning Commons with digital library research capabilities and fully-equipped television and digital editing studios, a 650 seat Performing Arts Center with a fly loft and scene shop; a dedicated dance studio and full-time curricular dance program; four gyms with a running track surrounding the main gym; a 4,500 square foot fitness center which is adjacent to 200 acres of playing fields, recreational facilities and competition stadiums.

Our Learning Community

District 196 encompasses 110 square miles and is located 15 miles south of Minneapolis & St. Paul. 150,000 residents and 27,000 students are served in 18 elementary, 6 middle & 5 high schools.

Our Faculty

College readiness is perpetuated by 230 faculty and staff members. Approximately 80% hold masters or doctorate degrees. 75% have 10 or more years of professional experience. All faculty members are engaged in focused collaborative teams of professional practice, where extensive action research informs instruction.

Comprehensive & College Preparatory Curriculum

15 subject areas are offered, including: Honors & Advanced Placement; College in the Schools; AVID; STEM Scholar Program, five languages; emphasis on instrumental and vocal music, which includes an in-school private lesson program; theater & dance; Career Development opportunities; Special Education and work program alternatives. Courses are designed to personalize the students learning and interests to support college readiness. All students are engaged in developing an individualized learning plan to meet their learning needs and goals. A curriculum guide is posted at www.district196.org/evhs.

Advanced Placement, Honors and U of M College in the Schools Courses (CIS)

Advanced Placement and Honors/Accelerated courses are offered across the curriculum and grade levels to meet the special needs of high-performing students interested in challenging and extending their intellectual potential. Over half of our students take an Advanced Placement course and the associated AP Exam. 90% of those students will receive a 3 or better score on an AP Exam.

Advanced Placement/College Courses

| | |
|-----------------------------|------------------------|
| AP Biology | AP Psychology |
| AP Calculus AB, BC | AP Statistics |
| AP Chemistry | AP Studio Art |
| AP Economics Macro, Micro | Multivariable Calculus |
| AP European History | Differential Equations |
| AP U.S. History | Linear Algebra |
| AP Language & Composition | CIS Mandarin Chinese |
| AP Literature & Composition | CIS English |
| AP Comp. Sci. A, Principles | CIS French & Spanish |
| AP Physics 1, C | CIS Anatomy Physiology |

Graduation Credit Requirements

| | |
|-------|----------------------------------|
| 12.00 | English/Language Arts (4 years) |
| 12.00 | Social Studies (4 years) |
| 9.00 | Mathematics (3 years) |
| 9.00 | Science (3 years) |
| 3.75 | Physical Education |
| 3.00 | Wellness (Health) and Safety Ed. |
| 17.25 | Elective courses |

66.00 Quarter credits for graduation

6200 140th St. West | Apple Valley, MN 55124 | 952.431.8900 | eastview@district196.org

<http://www.district196.org/evhs>

Fine & Performing Arts, Athletics, Activities, Intramurals, Community Service and Leadership

Opportunities beyond the school day play a substantial role in providing meaningful learning for our students. More than 80% of our student body is involved in state and nationally recognized activities. Over 110 different programs are offered in the fine and performing arts, athletics, student activities and academic honor societies. Our programs are designed to extend the spectrum of engagement; recreational involvement, personal development, competitive performance, leadership and service. Program summaries are posted at www.district196.org/evhs

Class Rank & Marking System

Class rank is determined by the grade point average of the quarter grades. All courses are included except those for which a pass/no-credit or no-grade mark is assigned. A student may choose to take one course each quarter for a pass/no-credit mark. **There are no weighted grades in the class rank calculation.**

Marking System

| | | | |
|----------|----------|----------|----------------|
| A = 4.0 | B- = 2.7 | D+ = 1.3 | F = 0.0 |
| A- = 3.7 | C+ = 2.3 | D = 1.0 | P = Pass |
| B+ = 3.3 | C = 2.0 | D- = 0.7 | NC = No Credit |
| B = 3.0 | C- = 1.7 | | |

Honors Ranking System

Toward encouraging students at Eastview High School to take the most challenging courses they are capable of studying, we incorporate a dual ranking system. Students will receive either a Regular Rank or an Honors Rank. The regular rank will rank students against all students in the class; the honors rank will rank qualifying honors students against other honors students who have taken a similarly difficult course schedule.

To qualify for an Honors Rank at Eastview High School, students must meet the following criteria:

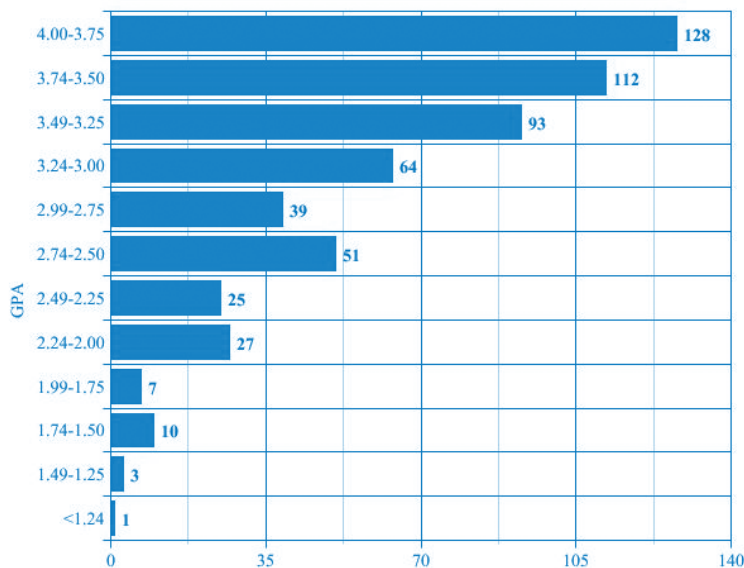
- Take at least thirty-two (32) quarter courses of Honors/AP core classes throughout grades 9-12. This must include eight (8) quarter courses in each of the 9th, 10th, 11th and 12th grade years.
- Students must earn a grade of "C" or better for an Honors/AP class to count toward the total/grade-level minimums.

NOTE: This is not "weighted" grading or ranking. It is simply a "dual" ranking system wherein ONLY students meeting the above qualifications would have an *Honors Rank*.

Our Mission: Educational Equity

Eastview believes that "all students can learn" and are provided the opportunity, support (prevention, intervention and post-vention) and personalized engagement to believe and perform at their assessed ability level as an Eastview Scholar. All of our scholars engage in college readiness programming that prepares them for continued post-secondary academic and personal success beyond high school.

Class of 2017 12th Quarter GPA Distribution



Total Number of Students = 559

National Merit Scholarship Qualifying Test

| Class | Commended Scholars | Semi / Finalists | Total |
|-------|--------------------|------------------|-------|
| 2016 | 6 | 3 | 9 |
| 2015 | 10 | 6 | 16 |
| 2014 | 13 | 5 | 18 |
| 2013 | 14 | 5 | 19 |

ACT (Core Students)

| Class | # Students | Eng | Math | Reading | Sci | Comp |
|-------|------------|------|------|---------|------|------|
| 2016 | 476 | 23.4 | 24.1 | 24.4 | 24.1 | 24.2 |
| 2015 | 392 | 24.0 | 24.8 | 25.2 | 24.6 | 24.8 |
| 2014 | 433 | 24.0 | 24.4 | 23.9 | 24.0 | 24.3 |
| 2013 | 440 | 23.2 | 23.7 | 23.9 | 23.8 | 23.8 |

ACT (Honors Ranked Students)

| Class | Avg. Composite ACT for *Honors Ranked Students |
|-------|--|
| 2016 | 28.6 |
| 2015 | 28.6 |
| 2014 | 28.8 |
| 2013 | 28.3 |

*Honors Ranked Ranking: 2 or more full-year honors or AP courses for 4 years.

AP Tests Results (includes grades 10, 11 and 12)

| Year | # of Exams | % Students 3+ | # of Students |
|------|------------|---------------|---------------|
| 2016 | 1296 | 88.9 | 612 |
| 2015 | 1294 | 84.5 | 627 |
| 2014 | 1306 | 88.8 | 634 |
| 2013 | 1203 | 88.0 | 595 |

Note: 50% of students in the Class of 2016 took an AP exam and were successful securing a score of 3 or above.

AP Scholars

| Year | Scholar | Honor | Distinction | National | Total |
|------|---------|-------|-------------|----------|-------|
| 2016 | 126 | 44 | 113 | 16 | 299 |
| 2015 | 114 | 54 | 98 | 23 | 289 |
| 2014 | 107 | 51 | 101 | 23 | 282 |
| 2013 | 100 | 53 | 107 | 25 | 285 |

Scholar 3 or + on 3 or more AP exams.
 Honor 3 or + on 4 or more AP exams & avg of 3.25 on all* AP exams.
 Distinction 3 or + on 5 or more AP exams & avg of 3.5 on all* AP exams.
 National 4 or + on 8 or more AP exams and an avg of 4 on all* AP exams.

Eastview High School Classes of 2012-2016 Post-Secondary Plans

Our year-end survey of the Class of 2016 indicated that 96% were intending to enroll in some type of post-secondary or advanced training after graduation. 80% intended to enroll in a four-year college, and 16% in a two-year college or technical school.

| | | |
|--|--------------------------------------|---|
| Academy College | College of Saint Benedict | Herzing University |
| Academy of Art University | College of St. Scholastica | High Point University |
| Alexandria Technical Community College | Colorado College | Hollins University |
| Allegheny College | Colorado State University | Indiana University at Bloomington |
| American Musical and Dramatic Academy | Concordia College - Moorhead | Indiana University of Pennsylvania |
| Anoka-Ramsey College | Concordia University at St. Paul | Indiana University - Purdue at Fort Wayne |
| Argosy University-Twin Cities | Cornell University | Inver Hills Community College |
| Art Institutes International Minnesota | Cornish College | Iona College |
| Arizona State University | Creighton University | Iowa State University |
| Ashland University | Crown College | Itasca Community College |
| Augsburg College | Dakota County Technical College | Kansas State University |
| Augustana College | Denison University | Kent State University |
| Aveda Institute Minneapolis | Delaware County Community College | Kenyon College |
| Ball State University | DePaul University | Kirkwood Community College |
| Belmont University | Des Moines Area Community College | Knox College |
| Beloit College | Drake University | Lafayette College |
| Bemidji State University | Drexel University | Lake Forest College |
| Benedictine University | Dunwoody College of Technology | Lake Superior College |
| Bethel University-MN | Eastern Kentucky University | Liberty University |
| Bismarck State College | Eastern Mennonite University | Lincoln College |
| Bob Jones University | Eastern Michigan University | Lawrence University |
| Boston College | Emerson College | Le Cordon Bleu at Brown Institute |
| Boston University | Emory University | Lee University |
| Brandeis University | Endicott College | Loyola University Chicago |
| Brigham Young University | Evangel University | Loyola Marymount University |
| Brown University | Evergreen State College | Luther College |
| Bryant University | Fairfield University | Marine Corps Institute |
| Bucknell University | Fashion Institute of Design | Macalester College |
| Butler University | Florida Gulf Coast University | Marquette University |
| California Institute of Technology | Florida Southern University | Marshall University |
| California Polytechnic University | Florida Southwest State College | McGill University |
| Capernwray Bible College | Fordham University | McNally Smith College of Music |
| Cardinal Stritch University | Franklin Olin College of Engineering | Mesabi Range Community College |
| Carleton College | Full Sail University | Metropolitan State University |
| Carthage College | George Washington University | Michigan Technological University |
| Case Western Reserve University | Georgia Gwinnett College | Milwaukee School of Engineering |
| Central College | Georgia Institute of Technology | Minneapolis Business College |
| Centre College | Glendale Community College | Minneapolis College of Art and Design |
| Central Michigan University | Gonzaga University | Minneapolis Community College |
| Century College | Grand View University | Minnesota School of Beauty |
| Chippewa Valley Technical College | Grinnell College | Minnesota State - Southeast Technical |
| Clark Atlanta University | Gustavus Adolphus College | Minnesota State University, Mankato |
| Coe College | Hamline University | Missouri Southern State University |
| Coffeyville Community College | Harvard University | Minnesota State University, Moorhead |
| Colby College | Hennepin Technical College | Monroe Community College |

Eastview High School Classes of 2012-2016 Post-Secondary Plans

| | | |
|---|--|--|
| Montana State University | St. Olaf College | University of New Hampshire |
| MidAmerican Nazarene University | St. Paul College | University of North Carolina |
| Miami University of Ohio | Stanford University | University of North Dakota |
| Mount St. Mary's College | Stevens Institute of Technology | University of Northern Iowa |
| Normandale Community College | Suffolk University | University of Northwestern |
| North Central University | Texas Tech University | University of Notre Dame |
| North Dakota State University | Texas Christian University | University of Oregon |
| North Dakota State College of Science | Tuffs University | University of Pennsylvania |
| Northeastern University | Tulane University | University of Sioux Falls |
| Northern Michigan University | United States Air Force Academy | University of South Carolina |
| Northern State University | United States Military Academy | University of Southern Indiana |
| Northland College | United States Naval Academy | University of St. Thomas |
| Northwestern University | Universal Technical Institute | University of Texas, Austin |
| Nova Southeastern University | University of Alabama | University of Texas, Dallas |
| Oberlin College & Conservatory | University of Arizona | University of Texas, El Paso |
| Ohio State University | University of California, Berkeley | University of Toledo |
| Oklahoma State University | University of California, Davis | University of Vermont |
| Orange Coast College | University of California at Los Angeles | University of Washington |
| Palm Beach Atlantic University | University of California at San Diego | University of Winnipeg |
| Paradise Valley Community College | University of Calgary | University of Wisconsin, Eau Claire |
| Paul Mitchell Beauty School | University of Central Florida | University of Wisconsin, La Crosse |
| Pennsylvania State University, Park | University of Chicago | University of Wisconsin, Madison |
| Princeton University | University of Colorado at Boulder | University of Wisconsin, Milwaukee |
| Providence College | University of Connecticut | University of Wisconsin, Oshkosh |
| Purdue University | University of Denver | University of Wisconsin, Platteville |
| Rasmussen College, Eagan | University of Edinburgh | University of Wisconsin, River Falls |
| Reed College | University of Georgia | University of Wisconsin, Stevens Point |
| Regency Beauty Institute | University of Guelph | University of Wisconsin, Superior |
| Regent's University | University of Illinois - Chicago | University of Wisconsin, Stout |
| Rensselaer Polytechnic Institute | University of Illinois at Urbana/Champaign | Valencia College |
| Rochester Community & Technical College | University of Iowa | Vanderbilt University |
| Rockhurst University | University of Hartford | Valparaiso University |
| Sacred Heart University | University of Kansas | Villanova University |
| Saint John's University | University of Maine | Viterbo University |
| Saint Mary's University of Minnesota | University of Manitoba | Wartburg College |
| San Diego Mesa College | University of Maryland | Washington State University |
| San Diego State University | University of Miami | Washington University in St. Louis |
| Seattle University | University of Michigan | Wellesley College |
| Simpson College | University of Minnesota, Crookston | Western Washington University |
| South Dakota State University | University of Minnesota, Duluth | Western Wisconsin Technical College |
| South Dakota State School of Mines & Technology | University of Minnesota, Morris | Wheaton College IL |
| Southeast Missouri State University | University of Minnesota, Rochester | Wheeling Jesuit University |
| Southwest Minnesota State University | University of Minnesota, Twin Cities | Wilber Wright College |
| St. Andrews Presbyterian College | University of Missouri Columbia | William Jewell College |
| St. Catherine University - St. Paul | University of Montana, Missoula | Winona State University |
| St. Cloud State University | University of Nebraska at Lincoln | Xavier University |
| St. Cloud Technical & Community College | University of Nebraska at Omaha | Yale University |

6200 140th St. West | Apple Valley, MN 55124 | 952.431.8900 | eastview@district196.org
<http://www.district196.org/evhs>

District 196 does not discriminate in employment or in any of its programs and activities, including vocational opportunities, on the basis of race, color, creed, religion, national origin, sex, marital status, status with regard to public assistance, familial status, membership or activity in a local human rights commission, disability, sexual orientation, age or genetic information. District 196 provides equal access to designated youth groups.

The Director of Human Resources, Tom Pederstuen (651-423-7859 – tom.pederstuen@district196.org) has been designated to respond to employment-related inquiries regarding the non-discrimination policies. The Director of Elementary Education, Sally Soliday (651-423-7782 – sally.soliday@district196.org) and the Director of Secondary Education, Dr. Mark Parr (651-423-7712 – mark.parr@district196.org) have been designated to respond to student-related inquiries regarding the non-discrimination policies. The Director of Special Education, Mary Kreger (651-423-7629 – mary.kreger@district196.org) has been designated to respond to inquiries concerning the rights of a student with a disability. The mailing address for all directors is 3455 153rd Street W, Rosemount, MN 55068.